

SOCKET FUSION TOOLS: SOCKET FACES, DEPTH GAUGE, CHAMFER TOOL

VANGUARD

Size	Part Number
3/4" SOCKET FACE	FHSF4P
1" SOCKET FACE	FHSF5P
1 1/4" SOCKET FACE	FHSF6P
1 1/2" SOCKET FACE	FHSF7P
2" SOCKET FACE	FHSF8P



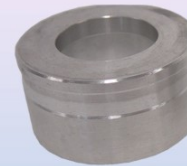
RITMO

Size	Part Number
3/4" IPS SOCKET FUSION FACE	RSP4
1" IPS SOCKET FUSION FACE	RSP5
1 1/4" IPS SOCKET FUSION FACE	RSP6
1 1/2" IPS SOCKET FUSION FACE	RSP7
2" IPS SOCKET FUSION FACE	RSP8



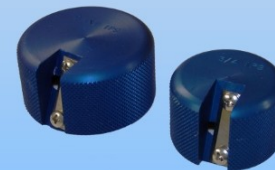
VANGUARD

Size	Part Number
3/4" DEPTH GAUGE	DG4A
1" DEPTH GAUGE	DG5A
1 1/4" DEPTH GAUGE	DG6A
1 1/2" DEPTH GAUGE	DG7A
2" DEPTH GAUGE	DG8A



RITMO

Size	Part Number
3/4" IPS CHAMFER TOOL/DEPTH GAUGE	CTDG4
1" IPS CHAMFER TOOL/DEPTH GAUGE	CTDG5
1 1/4" IPS CHAMFER TOOL/DEPTH GAUGE	CTDG6
1 1/2" IPS CHAMFER TOOL/DEPTH GAUGE	CTDG7
2" IPS CHAMFER TOOL/DEPTH GAUGE	CTDG8



****Re-coating of fusion plates and socket faces available up to 22".
Call for availability on other sizes.**

